



BUSINESS INDICATORS

AUSTRALIAN
CAPITAL
TERRITORY

EMBARGO: 11:30AM (CANBERRA TIME) TUE 19 OCT 1999

CONTENTS

	<i>page</i>
Notes	2
Summary of findings	3
Selected business indicators	5
FEATURE ARTICLES	
Labour Force Experience in the ACT	6
TABLES	
1 Business expectations: Sales, September quarter 1999/ June quarter 2000, expected aggregate change	9
2 Business indicators	10
3 ACT in relation to the rest of Australia	13
4 ACT in relation to the rest of Australia—percentage changes	14

- For further information about these and related statistics, contact Natalie Collins on Canberra 02 6207 0446 or Will Blythe on Canberra 02 6207 0311, or Client Services in any ABS office as shown on the back cover of this publication.

NOTES

FORTHCOMING ISSUES

<i>ISSUE</i>	<i>RELEASE DATE</i>
November 1999	23 November 1999
December 1999	21 December 1999
January 2000	25 January 2000
February 2000	22 February 2000
March 2000	20 March 2000
April 2000	26 April 2000

SYMBOLS AND OTHER USAGES

ACT	Australian Capital Territory
n.a.	not available
no.	number
n.p.	not available for publication
p	preliminary
*	Represents data with a standard error of greater than 25%. Caution should be exercised when using this data.
—	nil or rounded to zero

Dalma Jacobs
Regional Director, Australian Capital Territory

SUMMARY OF FINDINGS

UPDATED SERIES

Series updated since the September 1999 issue are: labour force, industrial disputes, retail trade, housing finance, building approvals, motor vehicle registrations, population, business expectations, job vacancies, tourist accommodation, private new capital expenditure. The feature article beginning on page 6 is on Labour Force Experience in the ACT.

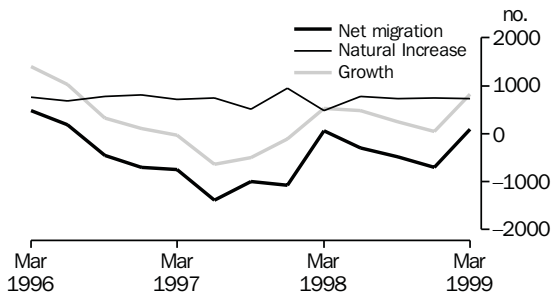
NOTABLE MOVEMENTS

- | | |
|---------------------------------|---|
| Labour force | <p>In September 1999, the trend unemployment rate for the ACT remained steady at 5.6% compared to the previous month, but decreased 1.1 percentage points compared to September 1998. Compared to the previous month trend employment increased by 0.7% (to 162,200 persons). Nationally, trend employment increased by 0.2% from the previous month, while the trend unemployment rate remained steady at 7.2% for September 1999. The trend participation rate in the ACT increased by 0.3 percentage points to 72.3% compared to the previous month, while nationally the trend participation rate increased 0.1 percentage points to 63.3%.</p> |
| Industrial disputes | <p>For the 12 months ended June 1999 there were 10 working days lost per thousand employees in the ACT compared to 56 days nationally. In comparison with the 12 months ended June 1998, there was a decrease of 67.7% for the ACT and a decrease of 31.7% nationally in the number of working days lost per thousand employees.</p> |
| Retail turnover | <p>The trend estimate for retail turnover in the ACT for August 1999 was \$225.4 million, an increase of 0.8% from the previous month and was up 7.4% compared to August 1998. The national trend retail turnover recorded an increase of 0.5% from the previous month and was up 6.3% compared to the previous year.</p> |
| Housing finance | <p>The trend number of dwelling units financed (including refinancing) in the ACT in August 1999 was 889, an increase of 2.7% from the previous month. The trend estimate for the value of commitments in the ACT increased 0.9% compared to the previous month, to be \$109 million in August 1999. Refinancing of existing dwellings comprised 15.9% of the total value of dwelling units financed in August 1999, an increase from 9.9% in the previous month. Nationally, the trend number of dwelling units financed (including refinancing) during August 1999 was 44,853, an increase of 0.1% from the previous month, while the trend estimate for the value of commitments increased to \$5,951 million (up 0.7%) from the previous month.</p> |
| Private new capital expenditure | <p>The trend private new capital expenditure in the ACT in the June quarter 1999 was \$73 million, a decrease of 17.0% from the previous quarter, but up 10.6% compared to the June quarter 1998. Private new capital expenditure on buildings decreased 20.8%, but equipment increased 9.3% since the June quarter 1998. Nationally, the trend private new capital expenditure was down 5.4% from the previous quarter and down 11.5% since the June quarter 1998.</p> |

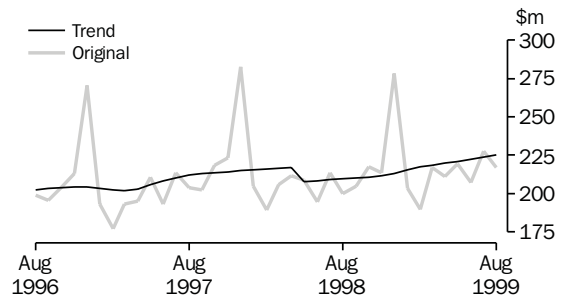
Building approvals	<p>The trend number of dwelling units approved in the ACT decreased from the previous month by 13.0% to 107 dwelling units in August 1999. Nationally, the trend number of dwelling units approved increased from July 1999 by 1.9% to 14,055 dwelling units in August 1999.</p> <p>The value of non-residential building approvals in the ACT was \$12.1 million in August 1999, a decrease of \$9.3 million from the previous month. There was also a decrease of \$17.4 million (down 59.0%) compared to August 1998. Nationally, the value of non-residential building approvals decreased by 9.4% from the previous month and was down 25.1% from August 1998.</p>
Motor vehicle registration	<p>The trend estimate for ACT new motor vehicle registrations in August 1999 was 1,118, down 1.6% from the previous month, and down 17.4% compared to August 1998. Nationally, the trend for total new motor vehicle registrations in August 1999 decreased 1.7% compared to July 1999, and was down 8.7% compared to August 1998.</p>
Job vacancies	<p>There were 3,500 job vacancies in the ACT for the August quarter 1999 recording a 59.1% increase from the previous quarter, and an increase of 94.4% from the corresponding quarter of the previous year. Nationally, job vacancies for August quarter 1999 grew 23.8% since the May quarter, and increased 20.5% on the previous year.</p>
Tourist accommodation	<p>The room occupancy rate for ACT hotels, motels and guest houses in the June quarter 1999 was 60.9%, up 3.3 percentage points from the previous quarter, and up 1.8 percentage points on June quarter 1998. Nationally the room occupancy rate decreased by 1.9 percentage points from the previous quarter, but increased 1.6 percentage points from the corresponding quarter of the previous year.</p> <p>Takings from accommodation were \$25.4 million for the June quarter 1999 in the ACT, up 13.9% from the corresponding quarter of the previous year. Nationally, takings from accommodation increased 7.4% from the previous year to \$946.4 million.</p>
Business expectations	<p>Business expectations in the ACT indicate a 1.9% increase in expected income from the sales of goods and services in the short term for the December quarter 1999. Nationally, there is an expected short term increase of 2.4% in the December quarter 1999. In the medium term (September quarter 1999 to September quarter 2000), growth of 2.8% in sales is expected for the ACT, just above the national expectation of 2.7%.</p>
Population	<p>The estimated resident population of the ACT in March quarter 1999 was 309,170, an increase of 817 persons since the December quarter 1998 and an increase of 1,534 persons since the March quarter 1998. The population for the 12 months to March 1999 in the ACT showed an increase of 0.5%, while Australia's population grew by 1.3%. For the March quarter 1999, net migration showed a gain of 758 residents, with net overseas migration being positive, while net interstate migration from the ACT was negative. Net interstate migration has remained negative since September quarter 1996.</p>

SELECTED BUSINESS INDICATORS

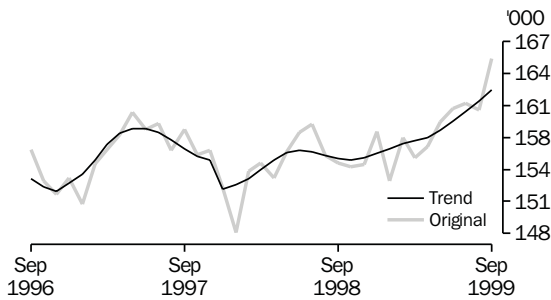
COMPONENTS OF POPULATION GROWTH



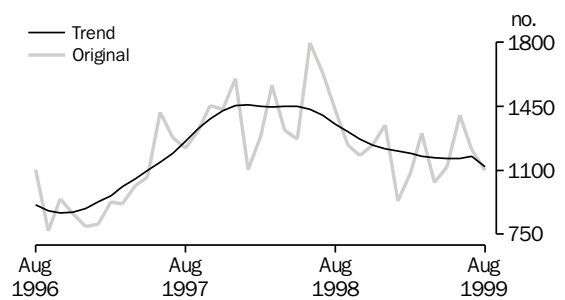
RETAIL TURNOVER



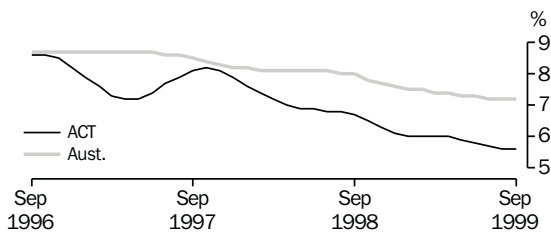
LABOUR FORCE, Employment



NEW MOTOR VEHICLE REGISTRATIONS

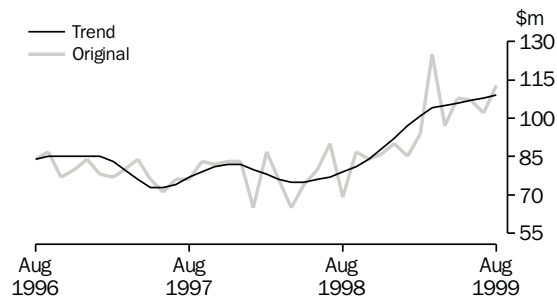


LABOUR FORCE—TREND UNEMPLOYMENT RATE

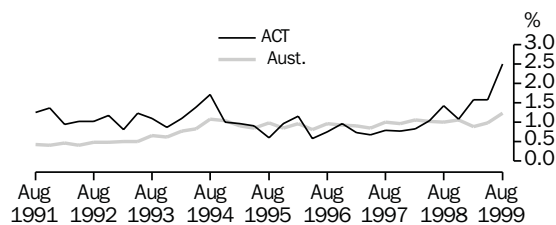


Note: Trend estimates for March 1999 to August 1999 have been revised.

HOUSING FINANCE

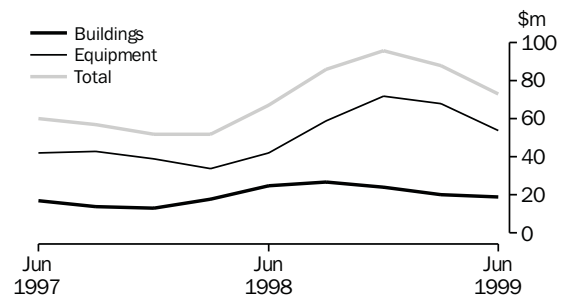


JOB VACANCY RATES, ACT AND AUSTRALIA—1991 to 1999



Note: Job vacancy rate is calculated by expressing the number of job vacancies as a percentage of the number of employees plus vacancies.

PRIVATE NEW CAPITAL EXPENDITURE: Trend



FEATURE ARTICLE

LABOUR FORCE EXPERIENCE IN THE ACT

ALL PERSONS AGED 15–69

There were approximately 217,500 ACT civilians aged 15–69 years in February 1999. This report contains information on their labour force experience throughout the year ending February 1999.

During the year ending February 1999:

- 168,700 persons worked at some time during the year, of which 115,00 spent the whole year working;
- 27,500 persons looked for work at some time during the year; and
- 90,300 persons were not in the labour force at some time during the year, of which 37,600 spent no time in the labour force.

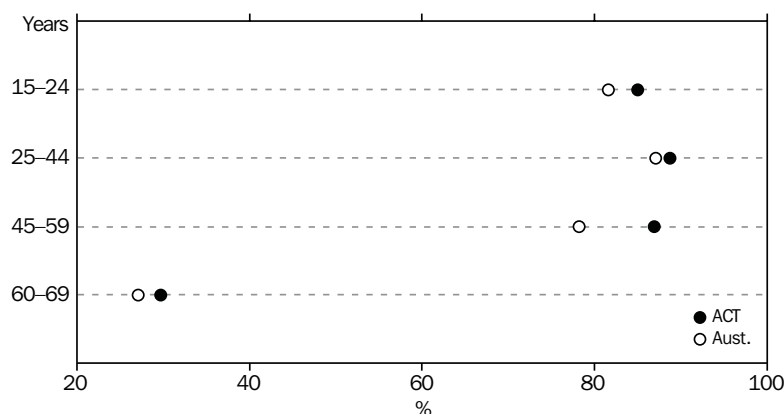
The terms *worked* and *looked for work* have been used to describe labour force activity throughout the year. Users of this data should be aware that these terms are not the same as the more precisely defined terms *employed* and *unemployed*, which are used in the monthly Labour Force Survey to describe current labour force status.

PARTICIPATION IN THE LABOUR FORCE

An estimated 179,900 persons aged 15–69 years in the ACT were in the labour force at some time during the year ending February 1999. That is, 83% of persons in the ACT aged 15–69 years either worked or looked for work at some time during the year, compared to 77% of Australians aged 15–69 years who either worked or looked for work at some time during the year.

In the ACT there was a higher proportion of males (87%) than females (78%) who had participated in the labour force at some time in the 12 months up to February 1999. In the corresponding period there was a similar trend for Australia, with 85% of males and 69% of females who participated in the labour force at some time.

LABOUR FORCE PARTICIPATION IN PREVIOUS 12 MONTHS



PARTICIPATION IN THE
LABOUR FORCE *continued*

The majority of people participating in the labour force spent all or most of the year in the labour force. Of persons in the ACT labour force at some time during the year, 71% spent the whole year in the labour force and 15% spent 39–52 weeks in the labour force. Similar proportions were recorded nationally.

PERSONS WHO WORKED AT
SOME TIME DURING THE
YEAR

There were 168,700 persons who worked at some time during the year ending February 1999. Of these, 86,700 (51%) were male and 82,000 (49%) were female. Some 79% of these males worked for the entire 52 weeks, compared to 71% of females. Of Australians who worked at sometime during the corresponding period, 56% were male and 44% were female.

Of those persons who worked at some time during the year ending February 1999:

- 78% of males in the ACT (80% for Australia) and 53% of females in the ACT (48% for Australia) worked full-time only; and
- 14% of males in the ACT (12% for Australia) and 35% of females in the ACT (41% for Australia) worked part-time only.

In the ACT for the 12 months ending February 1999, 61% of persons who worked at sometime during the year had post-school qualifications (54% nationally), compared with 36% of persons without post-school qualification (43% nationally). The remaining proportion are persons still at school.

PERSONS WHO LOOKED
FOR WORK AT SOMETIME
DURING THE YEAR

During the year ending February 1999, 15,100 males and 12,400 females in the ACT looked for work at sometime. Information about looking for work was only collected from persons for the periods when they were not working. About seven out of ten (68%) of people looking for work were aged between 15 and 34 years.

PERSONS WHO WERE NOT
IN THE LABOUR FORCE AT
SOME TIME DURING THE
YEAR

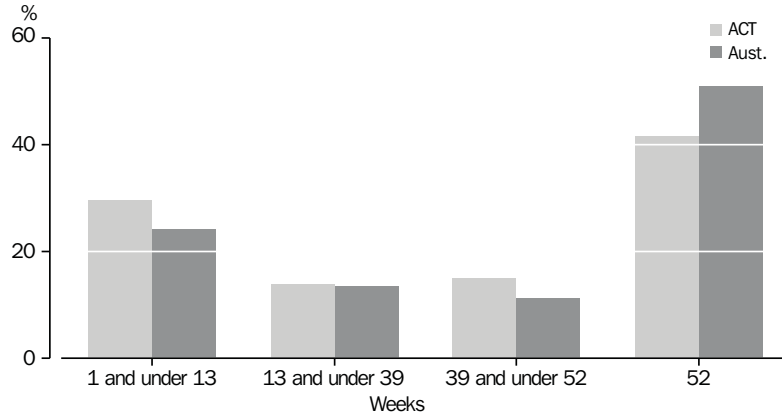
In the ACT an estimated 90,300 persons were not in the labour force at some time during the year ending February 1999. Of these 37,850 were male and 52,450 were female. Just over 40% of the people in this group spent no time in the labour force during the year. Of the Australian population who were not in the labour force at sometime during the year, half (51%) spent no time in the labour force during the year.

The main activities while not in the labour force most commonly reported by ACT males were 'attended an educational institution' (34%) and 'holiday or travel or leisure activities' (29%). For ACT females, the most commonly reported main activities were 'home duties or childcare' (44%) and 'attended an educational institution' (21%).

PERSONS WHO WERE NOT
IN THE LABOUR FORCE AT
SOME TIME DURING THE
YEAR *continued*

Nationally, males reported 'attended an educational institution' (27%) and 'holiday, travel, or leisure activities' (26%) as their main activities while not in the labour force. While for Australian females 'home duties or childcare' (55%) and 'attended an educational institution' (16%) were the most commonly reported activities.

TIME NOT IN LABOUR FORCE DURING THE YEAR



For further information please refer to *Labour Force Experience Australia, February 1999* (Cat. no. 6206.0).

1

BUSINESS EXPECTATIONS: SALES

<i>Period</i>	<i>ACT</i>	<i>Aust.</i>
	%	%
Short-term		
Dec qtr 1997–Mar qtr 1998	-1.1	-0.3
Mar qtr 1998–Jun qtr 1998	-0.1	1.7
Jun qtr 1998–Sep qtr 1998	2.7	1.1
Sep qtr 1998–Dec qtr 1998	3.5	1.6
Dec qtr 1998–Mar qtr 1999	-2.7	-0.9
Mar qtr 1999–Jun qtr 1999	0.4	1.8
Jun qtr 1999–Sep qtr 1999	1.4	1.8
Sep qtr 1999–Dec qtr 1999	1.9	2.4
Medium-term		
Dec qtr 1997–Dec qtr 1998	2.9	3.0
Mar qtr 1998–Mar qtr 1999	2.6	2.6
Jun qtr 1998–Jun qtr 1999	6.9	2.7
Sep qtr 1998–Sep qtr 1999	7.5	2.9
Dec qtr 1998–Dec qtr 1999	2.6	2.7
Mar qtr 1999–Mar qtr 2000	1.7	2.3
Jun qtr 1999–Jun qtr 2000	5.7	3.3
Sep qtr 1999–Sep qtr 2000	2.8	2.7

Indicator	Unit	ACT			Aust.		
		Latest figure	Previous period	Same period previous year	% change from		Same period previous year
					Latest figure	Previous period	
POPULATION, VITAL AND LABOUR							
POPULATION, Mar qtr 99	'000	309.2	0.3	0.5	18 918.4	0.4	1.3
Natural increase	no.	733	-2.5	-4.2	30 083	-4.2	-7.0
Net migration	no.	84	-44.6	54.5	37 099	35.3	17.0
Total increase	no.	817	947.4	150.0	67 182	14.2	4.9
LABOUR FORCE, Sep 99							
Original Series							
Employed	'000	165.3	3.2	6.6	8 908.0	2.0	2.0
Unemployed	'000	9.5	-2.1	-12.0	713.3	9.3	-6.4
Unemployment rate	%	5.5	-0.2	-1.0	7.4	0.4	-0.6
Participation rate	%	73.6	2.0	2.9	64.0	1.5	-0.1
Long-term unemployed, Aug 99	no.	2 979	18.2	-4.2	191 620	2.3	-21.9
Long-term unemployed as percentage of total unemployed		30.8	1.8	1.7	29.4	-0.6	-4.3
Trend series							
Employed	'000	162.2	0.7	4.4	8 828.0	0.2	2.1
Unemployed	'000	9.6	—	-13.5	683.2	0.1	-8.6
Unemployment rate	%	6.0	—	-1.1	7.2	—	-0.8
Participation rate	%	72.3	0.3	1.3	63.3	0.1	-0.1
WAGE AND SALARY EARNERS							
Number Employed—Trend series, Feb qtr 99							
Public sector	'000	65.8	-1.2	-5.2	1 447.0	0.3	-1.2
Private sector	'000	78.9	5.6	15.7	5 730.5	1.5	7.0
Total	'000	144.7	2.4	5.2	7 177.5	1.3	5.2
Gross Earnings—Original series, Mar qtr 99							
Public sector	\$m	786.5	-14.1	-13.0	15 046.0	-1.6	-1.1
Private sector	\$m	586.9	10.7	29.6	46 897.6	5.1	10.8
Total	\$m	1 373.5	-5.0	1.2	61 943.6	3.4	7.7
JOB VACANCIES, Aug qtr 99	'000	3.5	59.1	94.4	88.0	23.8	20.5
INDUSTRIAL DISPUTES IN PROGRESS, Jun 99							
Working days lost	'000	0.1	—	-95.2	28.1	67.3	-61.3
Days lost per '000 employees (year ended Jun 99)	no.	10.0	-58.3	-67.7	56.0	-9.7	-31.7
BUILDING AND CONSTRUCTION							
HOUSING FINANCE, May 99							
Secured commitments to individuals for							
Original Series							
Construction of dwellings	\$m	10.0	-16.7	42.9	949.0	7.2	36.5
Purchase of new dwellings	\$m	2.0	-71.4	—	223.0	-8.6	-5.5
Purchase of established dwellings	\$m	80.0	19.4	90.5	4 915.0	3.2	40.2
Re-financing	\$m	18.0	80.0	28.6	952.0	9.9	27.1
Total housing commitments	\$m	113.0	10.8	63.8	6 087.0	3.3	37.2
Seasonally adjusted series							
Total housing commitments	\$m	117.0	18.2	62.5	6 011.0	6.1	33.7
Trend series							
Dwelling units financed	no.	889	2.7	25.7	44 853	0.1	16.8
Total housing commitments	\$m	109.0	0.9	38.0	5 951.0	0.7	30.7
BUILDING APPROVALS, Aug 99							
Original series							
Dwelling units	no.	116	-16.5	-38.9	15 207	4.8	22.3
Value of new residential	\$m	15.7	-18.7	-27.3	1 837.1	5.6	34.6
Value of residential alterations and additions	\$m	10.0	58.7	132.6	307.9	7.0	32.1
Value of non-residential	\$m	12.1	-43.5	-59.0	1 090.4	-9.4	-25.1
Value of total building	\$m	37.9	-19.5	-31.6	3 235.5	0.1	5.9
Trend series							
Dwelling units	no.	107	-13.0	-29.6	14 055	1.9	9.6

Indicator	Unit	ACT			Aust.		
		% change from			% change from		
		Latest figure	Previous period	Same period previous year	Latest figure	Previous period	Same period previous year
BUILDING AND CONSTRUCTION <i>continued</i>							
BUILDING COMMENCEMENTS, Mar qtr 99							
New houses	no.	285	3.3	11.8	22 409	-12.3	8.2
Value of houses commenced	\$m	38.6	8.7	33.6	2 741.9	-10.2	16.6
Value of non-residential building commenced	\$m	130.1	167.7	91.3	2 857.8	-15.0	6.5
Value of total commencements	\$m	213.0	82.8	97.2	7 450.0	-11.1	13.1
PRICE INDEXES							
Established house price index, Mar qtr 99	—	129.5	0.7	2.5	134.3	2.3	5.8
ENGINEERING CONSTRUCTION (Mar qtr 99)							
Private sector							
Value of work commenced	\$m	20.6	112.4	-17.3	2 858.7	-0.4	5.7
Value of work done	\$m	11.5	-22.8	-45.0	2 642.7	-10.9	-7.2
Value of work yet to be done	\$m	17.5	110.8	78.6	5 869.3	3.0	-11.0
Value of work done by public sector	\$m	29.4	38.0	27.3	1 681.4	0.5	9.3
PRICES, WAGES AND CONSUMER SPENDING							
CONSUMER PRICE INDEX, Jun qtr 99							
Food(a)	—	128.3	-0.5	1.1	127.8	0.2	3.8
Housing(a)	—	94.7	0.4	1.4	96.6	0.4	2.2
Transportation(a)	—	128.2	1.3	-0.7	122.9	1.4	0.1
All groups(a)	—	121.5	0.1	0.2	122.3	0.4	1.1
AVERAGE WEEKLY EARNINGS, May qtr 99							
Original series							
Males	\$	886.5	0.4	-2.0	798.4	1.2	3.3
Females	\$	776.3	-0.3	1.5	669.6	0.2	3.5
Persons	\$	841.4	0.1	-0.7	750.8	0.8	3.3
Trend series							
Males	\$	881.4	-0.8	-3.0	796.0	0.6	2.6
Females	\$	775.3	-0.1	0.9	670.6	0.7	3.6
Persons	\$	836.8	-0.7	-1.5	749.4	0.6	2.9
WAGE COST INDEX, Jun qtr 99							
Public sector(b)	—	104.5	0.1	3.2	106.2	0.3	3.9
Private sector(b)	—	104.3	0.6	2.7	105.1	0.6	2.9
Total(b)	—	104.4	0.3	3.0	105.4	0.6	3.2
RETAIL TURNOVER, Aug 99							
Original series							
Food retailing	\$m	80.6	-1.9	3.1	4 656.0	-2.4	4.7
Department stores	\$m	20.3	-21.3	2.5	899.7	-14.7	3.4
Hospitality and services	\$m	34.6	1.5	6.1	1 942.2	-3.3	7.2
All other retailing	\$m	81.3	-4.9	17.1	3 843.4	-0.2	9.9
Total	\$m	216.8	-4.7	8.4	11 341.3	-2.9	6.7
Trend series							
Food retailing	\$m	81.3	0.2	2.5	4 763.0	0.4	4.5
Department stores	\$m	24.5	2.1	-1.2	1 046.9	0.8	2.4
Hospitality and services	\$m	33.6	-0.6	1.8	2 005.1	-0.1	9.7
All other retailing	\$m	86.0	1.4	18.1	3 975.0	0.7	8.0
Total	\$m	225.4	0.8	7.4	11 790.0	0.5	6.3

(a) Base year: 1989-90=100.0.

(b) Base of each index: September quarter 1997 = 100.0.

Indicator	Unit	ACT			Aust.		
		Latest figure	% change from		Latest figure	% change from	
			Previous period	Same period previous year		Previous period	Same period previous year
TOURISM AND TRANSPORT							
HOTELS, MOTELS AND GUEST HOUSE ACCOMMODATION, Jun qtr 99							
Original series							
Room nights	'000	259.7	7.7	17.4	9 427.3	-1.7	8.1
Takings at current prices	\$m	25.4	7.2	13.9	946.4	-5.7	7.4
Guest arrivals	'000	189.0	5.0	6.8	7 518.2	-1.0	5.2
Guest nights	'000	416.2	3.4	14.4	16 412.0	-4.1	8.2
Room occupancy rate	%	60.9	3.3	1.8	56.2	-1.9	1.6
NEW MOTOR VEHICLE REGISTRATIONS, Aug 99							
Motor vehicles	no.	1 099	-9.3	-23.1	59 892	-7.0	-6.9
Seasonally adjusted motor vehicles	no.	1 029	-14.9	-23.7	60 297	-3.6	-9.3
Trend motor vehicles	no.	1 118	-1.6	-17.4	62 202	-1.7	-8.7
AGGREGATE INDICATORS							
STATE ACCOUNTS, Jun qtr 99(a)							
Original series (chain volume measures)(b)							
Household final consumption expenditure	\$m	1 585	4.5	4.5	87 576	3.6	5.3
General government final consumption expenditure	\$m	2 745	23.3	12.7	27 968	12.1	4.2
Private gross fixed capital formation	\$m	444	-15.2	8.8	30 174	-11.1	-6.5
Public gross fixed capital formation	\$m	-47	-11.5	-20.0	7 763	-8.9	78.9
State final demand	\$m	4 726	14.4	8.4	153 481	8.4	4.5
Gross state product	\$m	11 943	4.3	n.a.	555 689	4.6	n.a.
STATE ACCOUNTS, Jun qtr 99(a)							
Original series (at current prices)							
Household final consumption expenditure	\$m	1 612	4.7	6.1	88 978	3.9	7.0
General government final consumption expenditure	\$m	2 803	23.6	14.3	28 670	11.9	6.2
Private gross fixed capital formation	\$m	443	58.2	7.6	30 431	13.4	-5.5
Public gross fixed capital formation	\$m	-33	-132.7	-16.7	7 910	-9.2	83.7
State final demand	\$m	4 826	15.2	9.9	155 990	8.4	5.7
Gross state product	\$m	12 111	5.8	n.a.	563 517	6.1	n.a.
PRIVATE NEW CAPITAL EXPENDITURE, Jun qtr 99							
Original series (at current prices)							
Buildings and structures	\$m	23	64.3	-36.1	2 805	-8.6	-23.5
Equipment, plant and machinery	\$m	49	-18.3	-9.3	7 887	7.1	-11.1
Total	\$m	72	-2.7	-20.0	10 691	2.5	-14.7
Trend series (at current prices)							
Buildings and structures	\$m	19	-5.0	-20.8	2 965	-11.4	-18.3
Equipment, plant and machinery	\$m	54	-20.6	28.6	7 573	-2.8	-8.5
Total	\$m	73	-17.0	10.6	10 478	-5.4	-11.5

(a) Quarterly state final demand details are released as a special data service (Cat. no. 5206.0.40.001).

(b) Reference year for chain volume measures is 1996-97.

Source: ABS publications: Australian Demographic Statistics (Cat. no. 3101.0), Australian National Accounts: State Accounts (Cat. no. 5242.0), Building Activity, Australia (Cat. no. 8752.0), Building Approvals, Australia (Cat. no. 8731.0), Consumer Price Index (Cat. no. 6401.0), Housing Finance for Owner Occupation, Australia (Cat. no. 5609.0), House Price Indexes: Eight Capital Cities (Cat. no. 6416.0), Industrial Disputes, Australia (Cat. no. 6321.0), Job Vacancies and Overtime, Australia (Cat. no. 6354.0), Labour Force, Australia, Preliminary (Cat. no. 6202.0), Labour Force, Australia (Cat. no. 6203.0), New Motor Vehicle Registration, Australia (Cat. no. 9301.0), Price Index of Materials Used in Housing Building (Cat. no. 6408.0), Private New Capital Expenditure, State Estimates (Cat. no. 5646.0), Retail Trade, Australia (Cat. no. 8501.0), Tourism Indicators, Australia (Cat. no. 8634.0), Tourism Accommodation, ACT (Cat. no. 8635.8).

Indicator	Unit	Latest period	NSW	Vic.	Qld	SA	WA	Tas.	NT	ACT	Aust.
POPULATION	'000	Mar qtr 99	6 397.2	4 701.4	3 498.2	1 491.9	1 854.6	470.5	192.2	309.2	18 918.4
LABOUR FORCE (trend)											
Employed persons	'000	Sep 99	2 946.9	2 207.0	1 644.7	665.1	907.0	197.4	94.8	162.2	8 828.0
Unemployment rate	%	Sep 99	6.6	7.3	8.1	8.3	6.7	8.9	3.6	5.6	7.2
WAGE AND SALARY EARNERS (trend)											
Public sector	'000	Feb qtr 99	468.2	305.4	285.8	113.1	145.8	41.5	21.8	65.8	1 447.0
Private sector	'000	Feb qtr 99	2 021.2	1 504.7	977.3	407.3	576.5	114.9	49.7	78.9	5 730.5
Total public and private sector (trend)	'000	Feb qtr 99	2 489.3	1 810.1	1 263.1	520.4	722.3	156.3	71.5	144.7	7 177.5
STATE ACCOUNTS,(a) (original)											
Gross state product (chain volume measures)	\$m	1997-98	196 676	141 219	90 188	38 092	60 695	11 095	5 779	11 943	555 689
Gross state product (current prices)	\$m	1997-98	199 448	143 209	91 459	38 629	61 550	11 251	5 860	12 111	563 517
PRIVATE NEW CAPITAL EXPENDITURE (trend)	\$m	Jun qtr 99	3 484	2 758	1 835	503	1 439	112	166	73	10 478
BUILDING APPROVALS											
Dwelling units approved (original)	no.	Aug 99	4 887	4 770	2 358	771	2 067	118	120	139	15 207
Dwelling units approved (trend)	no.	Aug 99	4 784	4 009	2 248	738	2 060	127	134	107	14 055
Value of non-residential building approved (original)	\$m	Aug 99	507.5	282.8	120.2	38.1	105.4	10.2	14.0	25.1	1 090.4
Value of all buildings approved (original)	\$m	Aug 99	1 271.9	978.5	412.2	130.0	347.3	25.8	31.8	37.9	3 235.5
ENGINEERING CONSTRUCTION											
Value of engineering construction work done	\$m	Mar qtr 99	1 289.4	865.4	1 078.8	218.8	695.8	62.7	72.3	41.0	4 324.1
AVERAGE WEEKLY EARNINGS (trend)											
Full-time adult ordinary time	\$	May qtr 99	792.7	734.9	703.6	699.4	750.9	696.3	752.3	836.8	749.4
RETAIL TRADE (trend)											
Retail turnover	\$m	Aug 99	4 092.2	2 893.2	2 169.3	849.3	1 157.4	269.4	126.6	225.4	11 790.0
HOTELS, MOTELS & GUEST HOUSE ACCOMMODATION											
Room nights occupied	'000	Jun qtr 99	3 099.8	1 545.6	2 586.2	505.3	861.7	238.6	330.5	241.1	9 585.8
Room occupancy rate	%	Jun qtr 99	57.9	55.4	56.1	54.6	53.3	47.6	59.3	57.6	58.4
NEW MOTOR VEHICLE REGISTRATIONS (trend)	no.	Aug 99	22 529	16 690	10 247	3 909	5 876	1 202	631	1 118	62 202
	Unit	Latest period	Syd.	Melb.	Bris.	Adel.	Perth	Hob.	Dar.	Canb.	Aust.
CONSUMER PRICE INDEX											
Food(d)		Jun qtr 99	128.7	126.7	126.3	128.8	129.6	126.8	126.7	128.3	127.8
Housing(d)		Jun qtr 99	104.3	87.5	102.0	92.8	91.3	95.9	116.9	94.7	96.6
Transportation(d)		Jun qtr 99	124.2	121.6	121.8	122.4	123.2	120.4	119.3	128.2	122.9
All Groups(d)		Jun qtr 99	123.0	121.5	123.1	123.6	120.8	122.5	122.7	121.5	122.3
Average retail prices (cents)											
Milk, carton, supermarket sales	1 litre	Jun qtr 99	122	140	126	136	141	130	135	115	n.a.
Bread, white loaf, sliced, supermarket sales	680 g	Jun qtr 99	211	233	200	163	203	203	220	212	n.a.
Beef, rump steak	1 kg	Jun qtr 99	1 249	1 090	1 033	1 201	1 138	1 081	1 207	1 214	n.a.
Chicken, frozen	1 kg	Jun qtr 99	353	354	348	353	362	387	427	336	n.a.
Potatoes	1 kg	Jun qtr 99	130	155	136	81	137	82	159	142	n.a.
Coffee, instant (jar)	150 g	Jun qtr 99	655	592	633	586	615	636	564	520	n.a.
Scotch nip, public bar	30 ml	Jun qtr 99	331	321	271	363	387	264	333	273	n.a.
Private motoring petrol											
Leaded	1 litre	Jun qtr 99	72.6	70.2	63.3	71.2	73.0	77.9	78.7	74.6	n.a.
Unleaded	1 litre	Jun qtr 99	70.1	67.8	60.9	68.8	70.7	75.9	76.7	72.3	n.a.

(a) State estimates are not comparable to national estimates from the June quarter 1995 due to revised methodology used in *Australian National Accounts, State Accounts* (Cat. no. 5242.0).

(b) Experimental series. Users are cautioned these estimates are derived indirectly by calculating a deflator from the expenditure components of the state series concerned. Therefore, in general, the sum of the state estimates does not equal the estimates for Australia.

(c) Reference year for chain volume measures is 1996-97.

(d) Base year: 1989-90 = 100.0.

Indicator	Latest									
	period	NSW	Vic.	Qld	SA	WA	Tas.	NT	ACT	Aust.
POPULATION	Mar qtr 99	0.3	0.4	0.5	0.2	0.5	-0.1	0.5	0.3	0.4
LABOUR FORCE (trend)										
Employed persons	Sep 99	0.2	0.3	—	0.2	0.2	0.2	0.4	0.7	0.2
Unemployment rate	Sep 99	0.1	-0.1	—	—	0.1	-0.2	-0.2	—	—
WAGE AND SALARY EARNERS (trend)										
Pubic sector	Feb qtr 99	0.8	0.1	0.6	-0.8	1.1	0.7	-1.8	-1.2	0.3
Private sector	Feb qtr 99	1.4	2.7	—	—	1.7	1.1	3.8	5.6	1.5
Total public and private sector	Feb qtr 99	1.3	2.3	0.1	-0.2	1.6	0.9	2.0	2.4	1.3
STATE ACCOUNTS(a) (original)										
Gross state product (chain volume measures)(b)(c)	Jun qtr 99	4.6	3.8	4.9	4.6	6.5	4.0	5.1	4.3	4.6
Gross state product (current prices)	Jun qtr 99	6.0	5.3	6.4	6.1	8.0	5.5	6.5	5.8	6.1
PRIVATE NEW CAPITAL EXPENDITURE (trend)										
Total (at current prices)	Jun qtr 99	-3.5	-2.4	-5.8	-7.5	-9.5	-0.9	-32.5	-17.0	-5.4
BUILDING APPROVALS										
Dwelling units approved (original)	Aug 99	-0.7	22.5	-1.3	-8.4	1.2	-25.3	-8.4	19.8	4.8
Dwelling units approved (trend)	Aug 99	2.9	3.8	-0.6	1.8	2.6	3.3	-4.3	-13.0	1.9
Value of non-residential building approved (original)	Aug 99	-2.6	13.9	-55.9	58.1	14.9	-45.5	169.2	-43.5	-9.4
Value of all buildings approved (original)	Aug 99	1.1	21.2	-28.0	-7.1	1.2	-31.4	30.3	-19.5	0.1
ENGINEERING CONSTRUCTION										
Value of engineering construction work done	Mar qtr 99	-8.8	2.6	-4.8	-10.6	-14.6	11.2	-26.1	13.3	-6.8
AVERAGE WEEKLY EARNINGS (trend)										
Full-time adult ordinary time	May qtr 99	1.3	0.2	0.5	-0.2	0.4	-0.2	0.1	-0.7	0.6
RETAIL TRADE (trend)										
Retail turnover	Aug 99	0.4	0.8	0.2	0.6	-0.1	0.3	0.5	0.8	0.5
HOTELS, MOTELS & GUEST HOUSE ACCOMMODATION										
Room nights occupied	Jun qtr 99	-3.5	-8.0	3.9	-3.7	-2.0	-27.2	43.8	-0.7	-3.2
Room occupancy rate	Jun qtr 99	-2.7	-6.6	1.2	-3.4	-2.5	-18.5	17.1	-1.3	-1.0
NEW MOTOR VEHICLE REGISTRATIONS (trend)	Aug 99	-0.5	-1.6	-2.9	-1.9	-3.7	-0.8	-4.4	-1.6	-1.7
	Latest									
	period	Syd.	Melb.	Bris.	Adel.	Perth	Hob.	Dar.	Canb.	Aust.
CONSUMER PRICE INDEX										
Food(d)	Jun qtr 99	-0.3	0.7	-0.1	0.6	0.9	1.0	120.6	-0.5	0.2
Housing(d)	Jun qtr 99	0.5	0.2	0.4	0.7	0.8	0.1	0.8	0.4	0.4
Transportation(d)	Jun qtr 99	1.4	1.4	1.1	1.2	1.7	1.7	0.2	1.3	1.4
All Groups(d)	Jun qtr 99	0.3	0.4	0.2	0.7	0.8	0.3	0.5	0.1	0.4
Average retail prices (cents)										
Milk, carton, supermarket sales	Jun qtr 99	—	0.7	5.9	—	—	—	3.8	0.0	n.a.
Bread, white loaf, sliced, supermarket sales	Jun qtr 99	-2.8	9.9	4.2	1.2	-2.4	—	1.4	1.0	n.a.
Beef, rump steak	Jun qtr 99	5.8	2.9	-3.1	0.7	4.3	8.0	1.4	6.3	n.a.
Chicken, frozen	Jun qtr 99	-4.3	-0.8	8.1	-3.3	3.4	2.4	12.1	-6.9	n.a.
Potatoes	Jun qtr 99	0.8	4.0	9.7	-1.2	-0.7	-7.9	6.7	-2.7	n.a.
Coffee, instant (jar)	Jun qtr 99	4.5	-6.6	8.4	5.4	-4.4	8.2	-4.2	-2.8	n.a.
Scotch nip, public bar	Jun qtr 99	0.6	0.9	0.7	1.4	-0.5	—	0.9	0.0	n.a.
Private motoring petrol										
Leaded	Jun qtr 99	5.7	5.1	5.1	4.2	6.0	5.1	4.0	3.6	n.a.
Unleaded	Jun qtr 99	5.6	5.0	5.2	4.4	6.0	5.3	4.1	3.7	n.a.

(a) State estimates are not comparable to national estimates from the June quarter 1995 due to revised methodology used in Australian National Accounts, State Accounts (Cat. no. 5242.0).

(b) Experimental series. Users are cautioned these estimates are derived indirectly by calculating a deflator from the expenditure components of the state series concerned. Therefore, in general, the sum of the state estimates does not equal the estimates for Australia.

(c) Reference year for chain volume measures is 1996-97.

(d) Base year: 1989-90 = 100.0.

SELF-HELP ACCESS TO STATISTICS

- CPI INFOLINE* For current and historical Consumer Price Index data, call 1902 981 074 (call cost 75c per minute).
- DIAL-A-STATISTIC* For the latest figures for National Accounts, Balance of Payments, Labour Force, Average Weekly Earnings, Estimated Resident Population and the Consumer Price Index call 1900 986 400 (call cost 75c per minute).
- INTERNET* www.abs.gov.au
- LIBRARY* A range of ABS publications is available from public and tertiary libraries Australia-wide. Contact your nearest library to determine whether it has the ABS statistics you require.

WHY NOT SUBSCRIBE?

- PHONE* +61 1300 366 323
- FAX* +61 03 9615 7848

CONSULTANCY SERVICES

ABS offers consultancy services on a user pays basis to help you access published and unpublished data. Data that is already published and can be provided within 5 minutes is free of charge. Statistical methodological services are also available. Please contact:

<i>INQUIRIES</i>	<i>City</i>	<i>By phone</i>	<i>By fax</i>
	Canberra	02 6252 6627	02 6207 0282
	Sydney	02 9268 4611	02 9268 4668
	Melbourne	03 9615 7755	03 9615 7798
	Brisbane	07 3222 6351	07 3222 6283
	Perth	08 9360 5140	08 9360 5955
	Adelaide	08 8237 7400	08 8237 7566
	Hobart	03 6222 5800	03 6222 5995
	Darwin	08 8943 2111	08 8981 1218

POST Client Services, ABS, PO Box 10, Belconnen ACT 2616

EMAIL client.services@abs.gov.au



2130380010998
ISSN 1320-808X

RRP \$15.50

© Commonwealth of Australia 1999

Produced by the Australian Bureau of Statistics